

SHOT OVER | M1 BROADCAST

A RADICAL SHIFT IN BREAKING NEWS COVERAGE

From high-speed pursuits to natural disasters, the M1 Broadcast's unrivaled look-down capability, superior range of movement, and next-generation real-time augmented reality mapping provides audiences with unparalleled viewpoints into breaking news.



M1 BROADCAST PACKAGE FEATURES

- 6-axis gyro stabilization provides unmatched look-down capability and versatility
- Quickly identify street addresses, traffic conditions, and even display a vehicle's speed during fast-moving pursuits in real-time
- No ITAR restrictions or EAR licensing requirements
- Auto or Steerable horizon with the most advanced steering capabilities on the market
- Open platform design allows for the integration of new payloads and other cutting-edge technology as it comes to market
- Windowless operation option for brilliant imagery without reflections
- Match your station's branding with custom color scheme and logo imprint options
- Shoot in adverse weather conditions with SHOTOVER accessories including rain spinner, desiccant valve, and demist fan

**SHOT
OVER**
SHOTOVER.COM

SHOTOVER HQ
5660 Airport Blvd., Suite 101
Boulder CO, 80301

NEW ZEALAND
133 Glenda Drive
Queenstown, 9300

LOS ANGELES
16303 Waterman Drive
Van Nuys CA, 91406

GERMANY SERVICE CENTER
Am Technologiepark 1-5, Gebäude 4,
Maintal Germany, 63477

SALES
+1 720 680-2457
info@shotover.com

CUSTOMER SUPPORT
+1 720 744-3300 | Dial 1 when prompted
support@shotover.com

GIMBAL SPECIFICATIONS

STABILIZATION

6-axis with no gimbal lock
High performance non-ITAR sensors
Distributed Multi-processor closed loop servo control system
Proprietary gimbal control algorithms

GIMBAL FIELD OF VIEW

Pan: 360 degrees continuous (via electrical and optical rotary joints)
Tilt: +50 to -110 degrees
Roll: +/-75 degrees (steerable or auto horizon)
Max slew rate: 100 deg/sec

WEIGHT

Turret without payload 18.9kg (41.6lbs) + payload
Operator control unit 2.5kg (5.5lbs)
External cable set: 1.0kg (2.2lbs)

POWER

24-60 VDC
10 Amps Max Draw (at 28V)

ENVIRONMENTAL

Operating Temperature: -20 to +40 C / -4 to 104 F

GIMBAL CONTROLLER

Customizable video overlay (Monitor Output)
Fully integrated camera control units; Ikegami RM-70F, Sony RM-B750, & NEC
Integrated 15VDC 120W Monitor Power Supply
LED display with customizable switches
Custom control layouts available upon request

CAMERA & LENS OPTIONS

	Fujinon 42x9.7 (HD)	Fujinon 42x13.5 (HD)	Fujinon 24x7.8 (4K)	Fujinon 46x9.5 (4K)	Fujinon 46x13.5 (4K)	Canon HJ24x7.5 (HD)	Canon HJ40x10 (HD) #	Canon HJ40x14 (HD) #	Canon CJ14x4.3 (4K)	Canon CJ20x7.5 (4K) #	Canon CJ45x9.7 (4K)
Sony P50 (4K)	●	●	●	●	●	●	●	●	●	●	●
Sony P43 (4K)	●	●	●	●	●	●	●	●	●	●	●
Sony P1 (HD)	●	●	●	●	●	●	●	●	●	●	●
Sony P70 (HD)	●	●	●	●	●	●	●	●	●	●	●
Ikegami F3000 (HD)*	●	●	●	●	●	●	●	●	●	●	●
Ikegami F4000 (4K)	●	●	●	●	●	●	●	●	●	●	●
NEC NC-H1200S (HD)	●	●	●	●	●	●	●	●	●	●	●
Grass Valley LD86C (4K)	●	●	●	●	●	●	●	●	●	●	●
Grass Valley LD80C (HD)	●	●	●	●	●	●	●	●	●	●	●

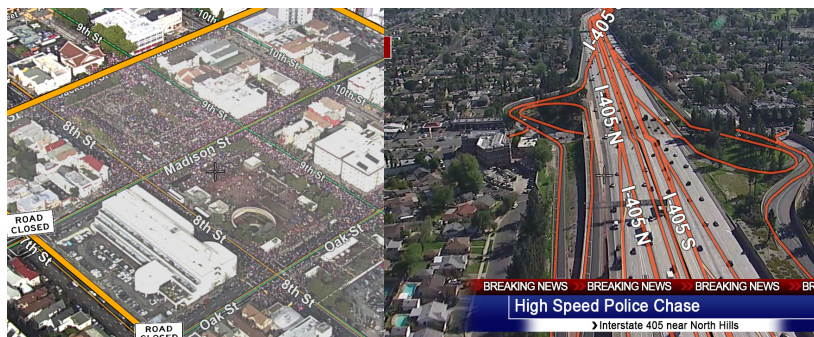
Key:

Scheduled for Development

* Obsolete

Please note cameras and lenses are not included and this is not an all inclusive list of all compatible cameras and lenses.

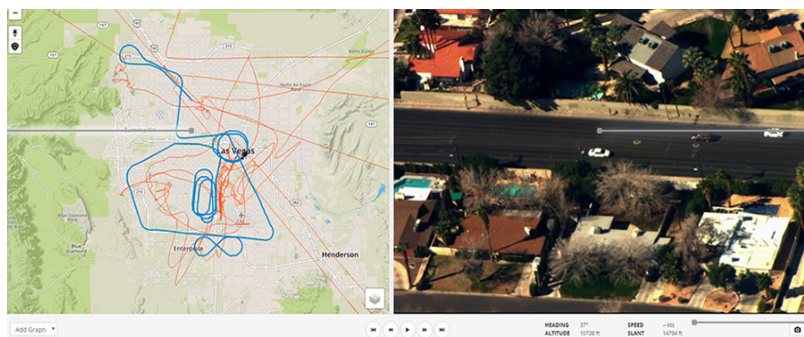
REAL-TIME AUGMENTED REALITY MAPPING



SHOTOVER's next generation augmented reality mapping software, overlays critical geo-referenced information on top of live video. In the aircraft or the control room, operators can interact with the live airborne video and have full control over what is shown on the broadcast feed.

- View streets, businesses, and just about any other geographical element on live video
- Quickly navigate to breaking news locations with our built-in address search and navigation tools
- Create and combine shapes to measure area of fires or estimate crowds
- Reduce operator workload by automatically steering the camera to the location
- Fully customizable branding, colors, logos, and on-screen graphics
- Lifetime of software updates included

LIVESTREAMING AND INTERNET VIEWING



Earthscape is a cloud-based video management tool that gives stations powerful control over their video and its metadata. Upload, review, and manage tags, clipmarks, and footprints for any video captured. Monetize helicopter footage that doesn't make the evening news!

- Upload and manage video archive in the secure cloud
- Quickly find stored videos utilizing filters and key search terms
- Livestream your broadcast with real-time moving maps that set your station apart
- Review all videos that took place in a region during a certain time span

With your SHOTOVER Systems package, you are eligible to receive 3 Months FREE of Earthscape with purchase.*

**SHOT
OVER**
SHOTOVER.COM

SHOTOVER HQ
5660 Airport Blvd., Suite 101
Boulder CO, 80301

NEW ZEALAND
133 Glenda Drive
Queenstown, 9300

LOS ANGELES
16303 Waterman Drive
Van Nuys CA, 91406

GERMANY SERVICE CENTER
Am Technologiepark 1-5, Gebäude 4,
Maintal Germany, 63477

SALES
+1 720 680-2457
info@shotover.com

CUSTOMER SUPPORT
+1 720 744-3300 | Dial 1 when prompted
support@shotover.com