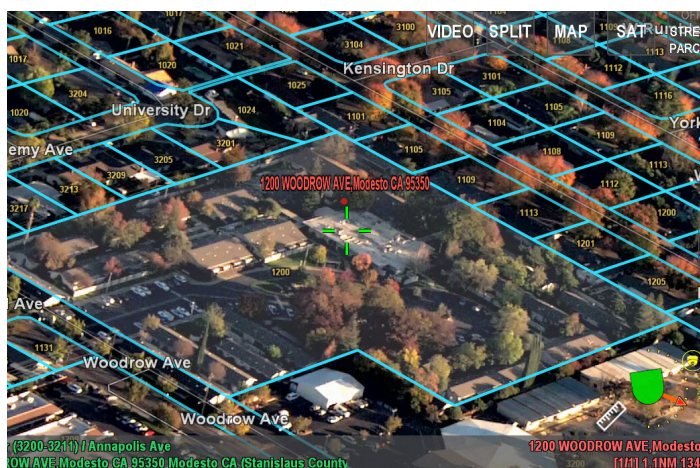




## THE PREMIER AIRBORNE AUGMENTED REALITY SOLUTION

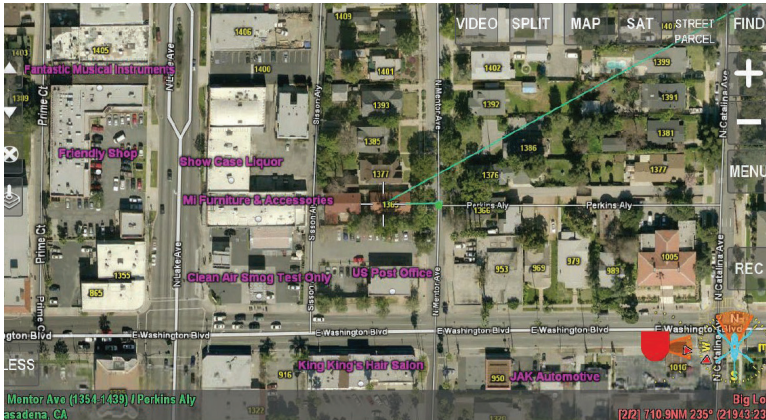
ARS is the most advanced and easy to use mission management system specifically designed for airborne law enforcement, search and rescue and aerial firefighting crews. The system provides unsurpassed situational awareness through state-of-the-art augmented reality overlays coupled with 3D satellite and synthetic imagery.



### ARS FEATURES

- View addresses, businesses names, streets and other points of interest over real-time EO/IR video
- Streamline mission critical data on a single display to increase crew effectiveness and simplify user workload
- Eliminate the need for stand-alone video recorders with ARS's built-in recording capability
- Quickly identify key locations and landmarks with integrated geo-markers, location look-up and various orientation views
- Keep up the pace with live speed tracking of vehicles on land or water
- Intuitive design enables a wide range of interface capability for display and control of other systems including searchlight, downlink, MTI, and more
- Perform quick and accurate perimeter mapping during a live event or natural disaster
- Reduce operator workload by creating on-the-fly search patterns and letting ARS automatically steer the camera

# COMMAND THE MISSION, CONTROL THE SCENE AND NEVER LOOK AWAY



## DETAILED MAP IMAGERY

- Enhanced USGS Topographic Charts
- FAA Sectional and Terminal Charts
- Nautical Charts
- Helicopter Route Charts
- Digital Elevation Models
- Custom and Customer Supplied Data



## DUAL CHANNEL HD DIGITAL RECORDER

- High Definition (720p, 1080i, 1080p) Recording
- Metadata Recording
- Audio Recording
- Simultaneous Playback While Recording
- User Defined Recording Buffer
- Records Using USB Media Sources

## UNRIVALED SUPPORT AND WARRANTY

- 3-Year Hardware Warranty
- No Annual Fee for Software Updates
- Custom Data Imports Included
- Access to Best-In-Class Training and Support



ARS runs on our smallest and most powerful mission computer yet - ATOM. Featuring a rugged solid-state design, ATOM is optimized to deliver cutting-edge augmented reality video and built-in HD quality video recording to SD or USB.

## ATOM SPECIFICATIONS

### REMOVABLE MEDIA SLOTS

USB 3.0 (x2)

### REAR CONNECTIONS

SDI Input (x2)  
RS-232 (x3)  
SDI Out (mirrored x2)  
RS-422 (x1)  
DisplayPort (DP++)  
PS/2  
Audio In/Out  
USB 2.0  
Gigabit Ethernet  
28 VDC Input

### WEIGHT

2.875 Lbs (1.22 Kg)

### SIZE

7.25" L x 5" W x 1.875" H  
(184.15 mm x 127 mm x 47.6 mm)

Manufacturer reserves the right to change specification to reflect improvements and or changes in technology at any time.

**SHOT  
OVER**

SHOTOVER.COM

5660 Airport Blvd., Suite 101  
Boulder CO, 80301  
United States

133 Glenda Drive  
Queenstown, 9300  
New Zealand

+1 720 680-2457  
info@shotover.com