



**SHOT  
OVER**

**M2** MULTI-SENSOR



# THERE'S NOTHING ELSE LIKE IT!

SHOTOVER's M2 Multi-Sensor system brings many firsts to airborne ISR with next generation imaging technology and automation.

At the core you will find SHOTOVER's 5th generation, true 6-axis gyro-stabilized gimbal design. It's the only EO/IR system that eliminates distracting horizon-rolling motion and won't tumble out of control when overflying the scene.

Experience unprecedented clarity - day and night - with the latest in 4K Ultra-High Definition, large format color sensors and advanced long life HOT High Operating Temperature High-Definition infrared technology. Precision high magnification zoom optics outclass and outrange traditional spotter-equipped systems with superior broadcast quality detail while maintaining greater stand-off distances for safety and stealth.

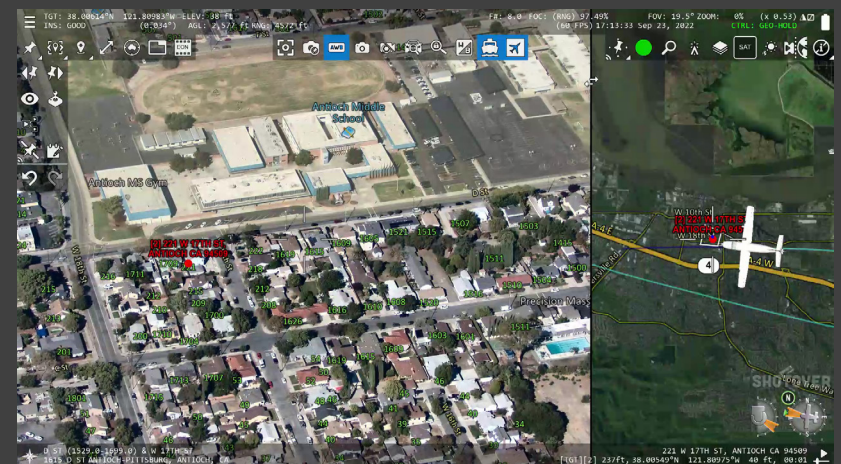
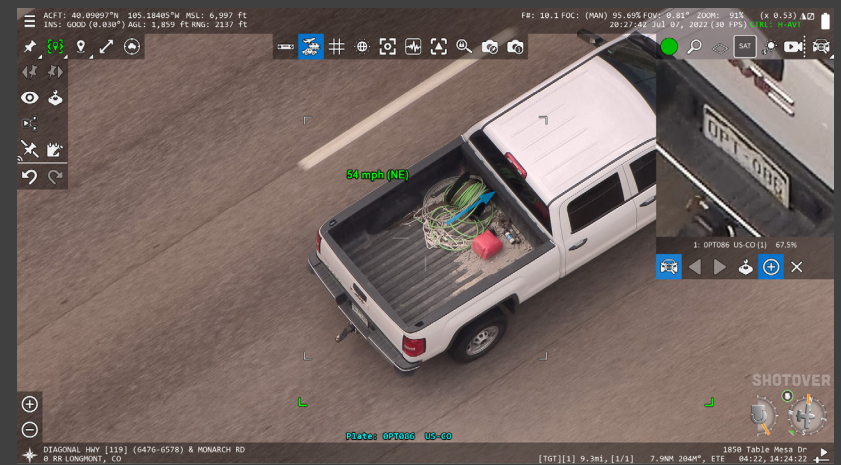
Other exclusive operational benefits include the ability to take 24MP digital photographs equivalent to professional DSLR still frame cameras, and automated camera steering, tracking, and lens zoom functions simplify control letting operators manage other critical mission tasks.

## APPLICATIONS

Law Enforcement  
Maritime Interdiction

Search & Rescue  
Fire Fighting  
Environmental Monitoring

Border Security  
Disaster Response



## M2 MULTI-SENSOR SYSTEM HIGHLIGHTS

- Unique 6-axis design provides outstanding stabilization with no “gimbal-lock” and level horizon
- Embedded next generation Augmented Reality System provides unsurpassed situational awareness
- Fully automated for hands-free following of vehicles, roads, railways, and other data objects
- Advanced Image Blending combines color and thermal sensors into one information-rich scene
- Real-time Anti-Turbulence Filter extends viewing distance in hot and humid conditions
- Built-in Artificial Intelligence (AI) for Automated License Plate Recognition (ALPR)
- Innovative software-defined features such as “ViewHold” to adjust zoom optics while maneuvering & “VLR” Virtual Laser Range-Finding to automatically calculate distances

## NEXT GENERATION MISSION MANAGEMENT

SHOTOVER's M2 Multi-Sensor system is a complete mission solution with built-in 4K video and metadata recording, and an all-new version of our exclusive Augmented Reality System. Experience valuable information displayed as real-time augmented reality overlays for instant identification of street names, addresses, POIs – connect almost any data source to visualize weather conditions, aircraft traffic from ADS-B, ship locations from AIS, cell and radio emissions, friendly force locations, and more.

- Quickly identify street addresses, traffic conditions, measure areas, calculate acreage, perform crowd size estimations, and even display a vehicle's speed during fast-moving pursuits
- Easily plan and transfer mission data from ground PCs to aircraft
- Standard GIS database with options for custom user data
- Record in full 4K resolution while displaying and streaming in HD
- Portrait mode video layout support ideal for newer glass cockpits
- Built-in simulator tool keeps operators proficient while saving flight hours
- Optional cloud-based service to archive, collaborate, and distribute video
- Simplified cabling requires only power, Ethernet, and GPS antenna
- Compatible with most FAA and EASA approved aircraft mounts
- Connect over the Internet for updates, new features & remote servicing
- Non-ITAR and fully NDAA compliant

## SYSTEM SPECIFICATIONS

### PAYLOAD

<b>EO Zoom:</b>	Large format color CMOS, global shutter 3840 x 2140 pixels, 4K UHD 21° to 0.6° (0.3° @ 1080p) cont. zoom
<b>EO Wide:</b>	Large format color CMOS, global shutter 3840 x 2140 pixels, 4K UHD 36° fixed wide view
<b>Photo Mode:</b>	24 Megapixel, BSI Stacked, global shutter 45mm to 3200mm (35mm equiv. FL)
<b>IR Zoom:</b>	Large format HOT Mid-Wave Infrared 1280 x 720 pixels, HD video 34° to 1.7° (0.9° @ 640) cont. zoom
<b>Laser Pointer:</b>	190mW, Near-IR
<b>Laser Illuminator:</b>	~2W, Near-IR
<b>Video Formats:</b>	2160p, 1080p, 1080i, 720p
<b>Image Formats:</b>	JPEG, RAW, GeoTIFF

### GIMBAL SYSTEM

<b>Type:</b>	6-axis stabilization with built-in vibration isolation
<b>Az Coverage:</b>	360° continuous
<b>EI Coverage:</b>	+30° to -120°
<b>Roll:</b>	+/- 50°
<b>Navigation:</b>	Fully integrated IMU & GPS receiver
<b>Size:</b>	16.4" x 19.1" excluding swept area
<b>Weight:</b>	104 lbs.
<b>Power:</b>	22-29 VDC (per MIL-STD-704E)
<b>Environment:</b>	-20 to +55C

### INTERFACES

<b>Video:</b>	2x SDI, 1x DisplayPort, 1x IP Stream
<b>Data:</b>	Ethernet, USB 3.0, serial ports, WiFi, audio
<b>Metadata:</b>	MISB compliant KLV, extended dataset
<b>CODECs:</b>	H.264, H.265



**UNRIVALED SUPPORT AND WARRANTY  
1 YEAR, 100% MONEY-BACK GUARANTEE**

**4K** Ultra HD

# SHOT OVER

SHOTOVER.COM

SHOTOVER HQ  
5660 Airport Blvd., Suite 101  
Boulder CO, 80301

NEW ZEALAND  
133 Glenda Drive  
Queenstown, 9300

UNITED KINGDOM  
Unit A3 Belmore Hill Court, Belmore Lane, Owslebury  
Hampshire, UK, SO21 1JW

SALES  
+1 720 680-2457  
info@shotover.com

CUSTOMER SUPPORT  
+1 720 744-3300 | Dial 1 when prompted  
support@shotover.com