



**SHOT  
OVER**

**M1**

SURVEILLANCE



# EXTREME RANGE FULL COLOR DAY & NIGHT IMAGING

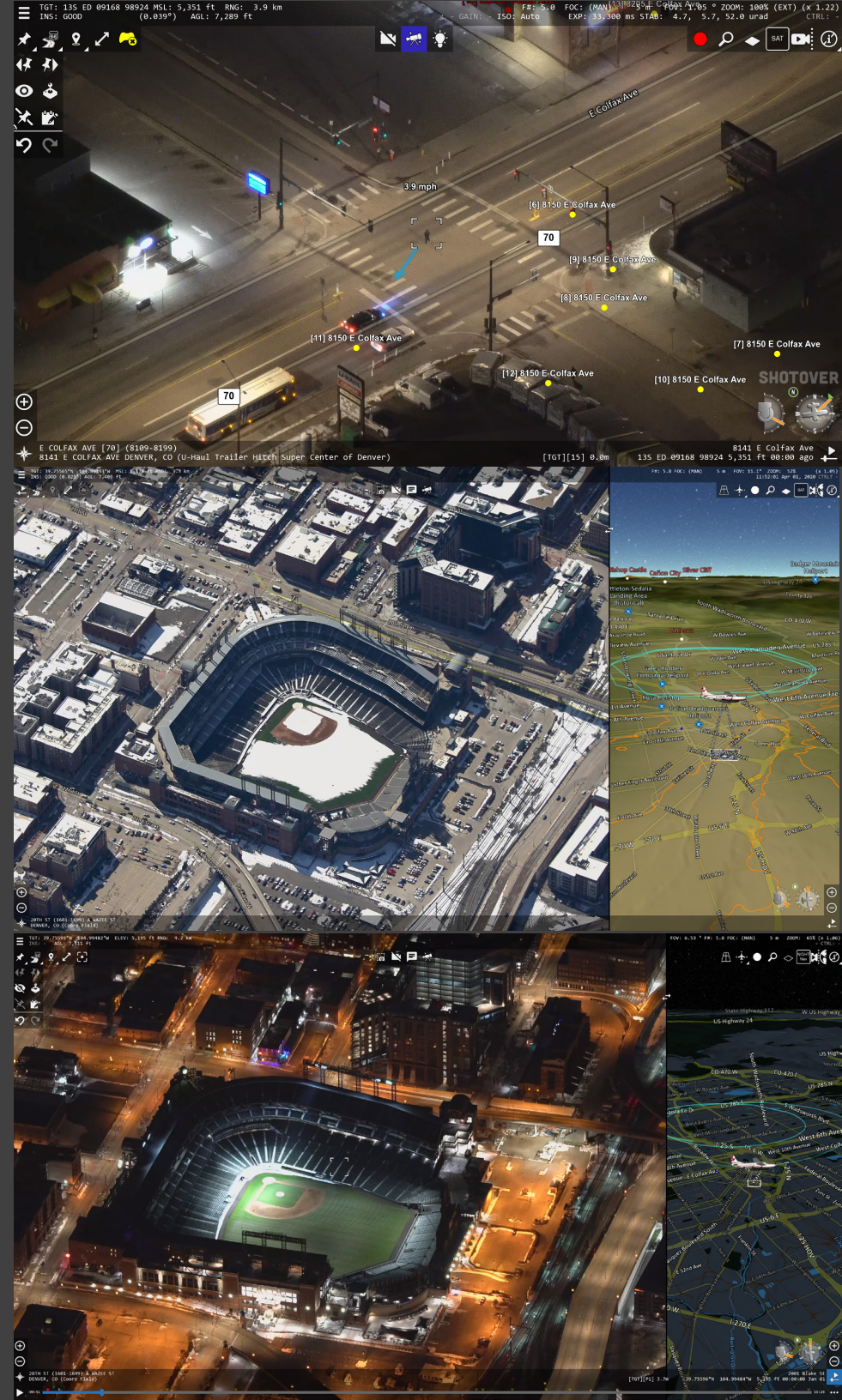
When your mission depends on capturing valuable intel in full color during 24-hour operations, the SHOTOVER M1 Surveillance is the only comprehensive solution you can rely on. A first in airborne surveillance, the M1 features the latest in large format color sensor technology for unprecedented daytime clarity and revealing nighttime detail. Precision high magnification zoom optics outclass traditional spotter-equipped systems with superior 4K Ultra HD broadcast quality detail while maintaining greater stand-off distances for safety and stealth.

At the core you will find SHOTOVER's unique 6-axis gimbal design that allows for a superior range of movement while delivering unshakable stability and unmatched look down capability. Featuring a modular open platform design, the system can accommodate future growth and the insertions of new technologies and capabilities from rapid payload changes and over-the-air software updates.

Additional exclusive benefits include the ability to take 12MP or 24MP digital photographs equivalent in quality to professional DSLR still frame cameras, and real-time internal Augmented Reality mission system for instant identification of street names, addresses, POIs, locations of other aircraft and vessels, friendly force trackers, terrain obstacles, weather and much more.

## APPLICATIONS

Surveillance    Law Enforcement    Counterdrug  
Counterterrorism    Disaster Response  
Environmental Monitoring





# M1 SURVEILLANCE SYSTEM FEATURES

- Generation5 gimbal technology delivers unshakable stability and ultimate functionality
- Latest generation color sensor technology with “night-mode” for extended response
- Embedded Augmented Reality Mission System connects to popular mission equipment including searchlights, radars, ADS-B and AIS receivers, TAK / ATAK devices, etc.
- Quickly identify street addresses, traffic conditions, and even display a vehicle’s speed during fast-moving pursuits
- Measure areas, calculate acreage, and perform crowd size estimations
- Easily plan and transfer mission data from ground PCs to aircraft using standard media
- Standard GIS database included with options for installing custom user data
- Hands-free operation to automatically follow roads, power lines, borders, and other data
- Record in full 4K resolution while displaying and streaming in HD or other formats
- Portrait mode video layout support ideal for newer glass cockpits with vertical displays
- Network-centric for streaming video to unlimited number of clients and seamlessly sharing control between local or remote operators
- Comprehensive simulator tool available for CBT computer-based training
- Optional Earthscape cloud-based video management system allows for easy review, tagging and clipping of video content
- Compact size and weight allow affordable transport as freight or excess baggage
- No ITAR restrictions or EAR licensing requirements
- Simplified cabling requires few connections
- Compatible with most FAA and EASA approved aircraft mounts



# SYSTEM SPECIFICATIONS

## PAYLOAD

Sensor type:	large format color CMOS
Resolution:	3840 x 1920 pixels, 4K UHD
Still Photo:	12 Megapixel (24 Megapixel optional)
Focal Length:	50 – 1500 mm continuous zoom
Video Format:	2160p, 1080p, 1080i, 720p
Image Format:	JPEG, RAW

## SYSTEM

Type:	6-axis stabilization with built-in vibration isolation
Az Coverage:	360° continuous
EI Coverage:	+50° to -110°
Roll:	+/- 75°
Navigation:	fully integrated IMU & GPS receiver
Size:	15” x 19.8” excluding swept area
Weight:	Less than 75 lbs
Power:	22-29 VDC (per MIL-STD-704E) Less than 280 watts
Environment:	-20 to +55C

## INTERFACES

Video:	2x SDI, 1x DisplayPort, 1x IP Stream
Data:	Ethernet, USB 3.0, RS232/422 serial ports, WiFi, Audio
Metadata:	MISB compliant KLV, extended dataset
CODECs:	H.264, H.265

## SUPPORT

24/7/365 global phone support  
Remote access support (data access required)



**4K** Ultra HD

# SHOT OVER

SHOTOVER.COM

SHOTOVER HQ  
5660 Airport Blvd., Suite 101  
Boulder CO, 80301

NEW ZEALAND  
133 Glenda Drive  
Queenstown, 9300

UNITED KINGDOM  
Unit A3 Belmore Hill Court, Belmore Lane, Owslebury  
Hampshire, UK, SO21 1JW

SALES  
+1 720 680-2457  
info@shotover.com

CUSTOMER SUPPORT  
+1 720 744-3300 | Dial 1 when prompted  
support@shotover.com