

SHOT OVER

M1 ENG & CINEMA



UNMATCHED 6-AXIS CAPABILITIES

Spanning live news and sports coverage to creative and wildlife filming, the SHOTOVER M1 is as a groundbreaking 6-axis gyro stabilized platform, meticulously engineered to cater to diverse markets. The system's unrivaled look-down capability, superior range of movement, and next-generation real-time augmented reality mapping capabilities provide audiences with unparalleled viewpoints into unfolding scenes captured through the lens.

Fueled by its innovative open platform design, the M1 effortlessly paves the way for future resolution enhancements. Taking its rightful place within SHOTOVER's innovative product line, the M1 sets new benchmarks for gimbal innovation.

- **Compact & Lightweight Design:** Outperforms heritage systems
- **SHOTOVER Generation5 Tech:** Stable, ultimate functionality
- **6-Axis Stabilization:** Exceptional "look down" capability
- **Factory-Fitted Payload:** Simplifies shipping logistics
- **Cost-Effective Transport:** As freight or baggage
- **Durable construction:** Rugged 6061-T6 Aluminum
- **No ITAR Restrictions**
- **Mount Compatibility:** FAA, EASA approved options
- **Versatile Top Plate:** Adaptable across air, land, sea
- **AR Mapping Integration:** Augmented Reality Mapping ready
- **Flare-Free Imagery:** Angled window for clarity
- **Diverse Video Choices:** 3x SDI or fiber options
- **Instant Operator Feedback:** Customizable graphics overlay
- **Precision Steering:** Auto/steerable horizon modes
- **Inverted Operation:** Auto-position for smooth adaptation
- **Branding Customization:** Tailor color scheme to your brand



**SHOT
OVER**
SHOTOVER.COM

SHOTOVER HQ
5660 Airport Blvd., Suite 101
Boulder CO, 80301

UNITED KINGDOM
Unit A3 Belmore Hill Court, Belmore Lane, Owslebury
Hampshire, UK, SO21 1JW

NEW ZEALAND
133 Glenda Drive
Queenstown, 9300

SALES
+1 720 680-2457
info@shotover.com

CUSTOMER SUPPORT
+1 720 744-3300 | Dial 1 when prompted
support@shotover.com

Specifications are subject to change without notice. ©2024 SHOTOVER Systems, Inc. All rights reserved.

M1 GIMBAL SPECIFICATIONS

STABILIZATION

6-axis with no gimbal lock
High performance non-ITAR sensors
Distributed Multi-processor closed loop servo control system
Proprietary gimbal control algorithms

GIMBAL FIELD OF VIEW

Pan: 360 degrees continuous (via electrical and optical rotary joints)
Tilt: +50 to -110 degrees
Roll: +/-75 degrees (steerable or auto horizon)
Max slew rate: 100 deg/sec

WEIGHT

Turret without payload 18.9kg (41.6lbs) + payload
Operator control unit 2.5kg (5.5lbs)
External cable set: 1.0kg (2.2lbs)

POWER

24-60 VDC
10 Amps Max Draw (at 28V)

ENVIRONMENTAL

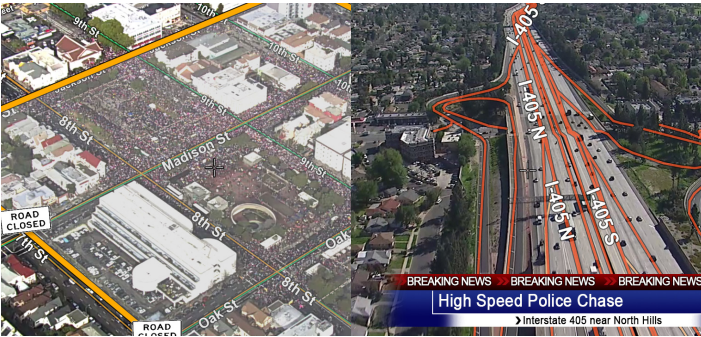
Operating Temperature: -20 to +40 C / -4 to 104 F
Maximum Airspeed: Stability - 130 knots / Safety - 200 knots

GIMBAL CONTROLLER

Customizable video overlay (Monitor Output)
Fully integrated camera control units; Ikegami RM-70F,
Sony RM-B750, & NEC
Integrated 15VDC 120W Monitor Power Supply
LED display with customizable switches
Custom control layouts available upon request

Manufacturer reserves the right to change specification to reflect improvements and or changes in technology at any time.

REAL-TIME AUGMENTED REALITY MAPPING



SHOTOVER's advanced AR mapping software overlays geo-referenced data on top of live video, empowering operators in aircraft or control rooms to interact and control broadcast feed content.

- Live video displays streets, businesses, and more
- Instantly locate breaking news with address search
- Measure areas, estimate crowds with shape tools
- Automated camera steering eases operator load
- Customized branding, colors, logos, on-screen graphics
- Inclusive lifetime software updates

**SHOT
OVER**
SHOTOVER.COM

SHOTOVER HQ
5660 Airport Blvd., Suite 101
Boulder CO, 80301

UNITED KINGDOM
Unit A3 Belmore Hill Court, Belmore Lane, Owslebury
Hampshire, UK, SO21 1JW

Specifications are subject to change without notice. ©2024 SHOTOVER Systems, Inc. All rights reserved.

NEW ZEALAND
133 Glenda Drive
Queenstown, 9300

SALES
+1 720 680-2457
info@shotover.com

CUSTOMER SUPPORT
+1 720 744-3300 | Dial 1 when prompted
support@shotover.com

M1 CINEMA CAMERA & LENS OPTIONS

	Fujinon Cabrio ZK 14-35	Fujinon Cabrio ZK 19-90	Fujinon Cabrio XK 20-120	Fujinon Cabrio ZK 85-300	Fujinon Premier 18-85	Fujinon Premista 28-100	Fujinon Premista 80-250	Canon CN7x17 (17-120)	Canon CN10x25 (25-250)	Canon CNE 30-300	Canon CN20x50 (50-1000)	Angenieux 45-120 #	Angenieux 15-40 / 28-76 #	Angenieux 25-250 HR
RED DSMC2 **	●	●	●	●	●	●	●	●	●	●	●	●	●	●
RED Komodo ~	●	●	●	●	●	●	●	●	●	●	●	●	●	●
RED V-Raptor	●	●	●	●	●	●	●	●	●	●	●	●	●	●
ARRI Mini	●	●	●	●	●	●	●	●	●	●	●	●	●	●
ARRI Mini LF	●	●	●	●	●	●	●	●	●	●	●	●	●	●
Sony F55	●	●	●	●	●	●	●	●	●	●	●	●	●	●
Sony Venice	●	●	●	●	●	●	●	●	●	●	●	●	●	●
Sony Venice II	●	●	●	●	●	●	●	●	●	●	●	●	●	●

M1 ENG CAMERA & LENS OPTIONS

	Fujinon 42x9.7 (HD)	Fujinon 42x13.5 (HD)	Fujinon 14x4.5 (4K)	Fujinon 24x7.8 (4K)	Fujinon 46x9.5 (4K)	Fujinon 46x13.5 (4K)	Canon HJ24x7.5 (HD)	Canon HJ40x10 (HD) #	Canon HJ40x14 (HD) #	Canon CJ14x4.3 (4K)	Canon CJ15x4.3 (4K)	Canon CJ18x28 (4K)	Canon CJ20x7.5 (4K) #	Canon CJ25x7.6 (4K)	Canon CJ45x9.7 (4K)
Sony P50 (4K)	●	●	●	●	●	●	●	●	●	●	●	●	●	●	●
Sony P43 (4K)	●	●	●	●	●	●	●	●	●	●	●	●	●	●	●
Sony P1 (HD)	●	●	●	●	●	●	●	●	●	●	●	●	●	●	●
Sony P70 (HD)	●	●	●	●	●	●	●	●	●	●	●	●	●	●	●
Ikegami F3000 (HD)®	●	●	●	●	●	●	●	●	●	●	●	●	●	●	●
Ikegami F4000 (4K)	●	●	●	●	●	●	●	●	●	●	●	●	●	●	●
NEC NC-H1200S (HD)	●	●	●	●	●	●	●	●	●	●	●	●	●	●	●
Grass Valley LD86C (4K)	●	●	●	●	●	●	●	●	●	●	●	●	●	●	●
Grass Valley LD80C (HD)	●	●	●	●	●	●	●	●	●	●	●	●	●	●	●

CUSTOM

KEY:

- # Scheduled for Development
- ** Jetpack SDI Expander required
- ~ RF lens mount adaptor required
- Ø Obsolete
- Not Tested

Canon EF 200mm F2.0	●	●
Canon EF 400mm F2.8 III	●	●
Sony FX6	●	●

Please note cameras and lenses not included. This list is not all inclusive.
Please contact sales@shotover.com for additional combinations.

UNRIVALED SUPPORT AND WARRANTY

- Includes 1-Year Hardware Warranty
- No Annual Fee for Support or Software Updates
- 24/7 Service and Support Line