

# SHOT OVER | F1



## FROM BROADCAST TO FEATURE FILMS

The SHOTOVER F1 is a 6-axis gyro stabilized platform that delivers unshakable stability with look down capability and no gimbal lock for use inverted or underslung on almost anything that moves. It rigs fast and accommodates hundreds of camera and lens combinations, for the look you want. Its compact carbon fiber construction means it ships as excess baggage on commercial flights worldwide with no export restrictions.

- **Rapid Interchangeability:** Quickly switch cameras and lenses
- **No ITAR Restrictions**
- **Mount Compatibility:** FAA, EASA approved options
- **Versatile Top Plate:** Adaptable across air, land, sea
- **Factory-Fitted Payload:** Simplifies shipping logistics
- **Efficient Transport:** Cost-effective as freight or baggage
- **Lighweight & Compact:** Low-weight carbon fiber structure
- **SHOTOVER Generation5 Tech:** Stable, ultimate functionality
- **6-Axis Stabilization:** Exceptional "look down" capability
- **AR Mapping Integration:** Augmented Reality Mapping ready
- **Flare-Free Imagery:** Angled window for clarity
- **Diverse Video Choices:** 3x SDI or fiber options
- **Instant Operator Feedback:** Customizable graphics overlay
- **Precision Steering:** Auto/steerable horizon modes
- **Inverted Operation:** Auto-position for smooth adaptation
- **Branding Customization:** Tailor color scheme to your brand

## GIMBAL SPECIFICATIONS

### STABILIZATION

6-axis with no gimbal lock  
High performance non-ITAR sensors  
Distributed Multi-processor closed loop servo control system  
Proprietary gimbal control algorithms

### GIMBAL FIELD OF VIEW

Pan: 360 degrees continuous (via electrical and optical rotary joints)  
Tilt: +45 to -140 degrees  
Roll: +/-85 degrees (steerable or auto horizon)  
Max slew rate: 100 deg/sec

### WEIGHT

Turret with max payload less than 59kg (130lbs)  
Operator control unit 2.7kg (6lbs)  
Junction control box 4kg (9lbs)  
External cable set: 2.5kg (5.5lbs)

### POWER

19-32 VDC  
12 Amps Max Draw (at 28V)

### ENVIRONMENTAL

Operating Temperature: -20 to +50 degrees C / -4 to 122 degrees F  
Maximum Airspeed: Stability/Safety - 200 knots

### GIMBAL CONTROLLER

Customizable Video Overlay (Monitor Output)  
Force Joystick Option  
Iris Wheel control on the side and top of controller  
Adjustable friction drag control for Iris Wheel and Focus Knob  
Selectable control between Rocker and Joystick Twist  
Break out F+Z control with Preston HU3  
Dual 5V USB A Ports for powering Accessories  
Multiple Mount Holes on top & rear  
Recess for camera remotes such as:  
Sony RM-B750, ARRI RCU-4, and Canon RC-V100  
Other control layouts available upon request



**SHOT  
OVER**  
SHOTOVER.COM

SHOTOVER HQ  
5660 Airport Blvd., Suite 101  
Boulder CO, 80301

NEW ZEALAND  
133 Glenda Drive  
Queenstown, 9300

UNITED KINGDOM  
Unit A3 Belmore Hill Court, Belmore Lane, Owslebury  
Hampshire, UK, SO21 1JW

SALES  
+1 720 680-2457  
info@shotover.com

CUSTOMER SUPPORT  
+1 720 744-3300 | Dial 1 when prompted  
support@shotover.com

## CINEMA CAMERA & LENS COMBINATIONS

	Fujinon Cabrio ZK 14-35	Fujinon Cabrio ZK 19-90	Fujinon Cabrio XK 20-120	Fujinon Cabrio ZK 85-300	Fujinon Cabrio ZK 25-300	Fujinon Premier HK14.5-45	Fujinon Premier HK18-85	Fujinon Premier HK24-180	Fujinon Premista 19-45	Fujinon Premista 28-100	Fujinon Premista 80-250	Canon CN7x17 (17-120)	Canon CN10x25 (25-250)	Canon CN-E 14.5-60	Canon CN-E 30-300	Canon CN20x50 (50-1000)	Canon EF Fish Eye	Angenieux Optimo 45-120/28-76/15-40	Angenieux Optimo 16-40	Angenieux Rouge 16-42	Angenieux 25-250 HR	Angenieux Optimo Style DP 25-250	Angenieux Optimo 17-80	Angenieux 30-72 Anamorphic	Angenieux Optimo 44-440 Anamorphic	Arri Alura 18-80	Arri Alura 15.5-45	Arri Alura 30-80	Arri Alura 45-250	Arri Master Prime 14mm	Arri Master Prime 16mm	Arri UWZ 9.5-18	Panavision ATZ 70-200 Anamorphic	Zeiss Master Prime 10mm	Zeiss Master Prime 14mm	Zeiss Master Prime 16mm	Zeiss 70-200 CZ.2					
RED DSMC1	●	●	●	●	●	●	●	●	●	●	●	●	●	●	●	●	●	●	●	●	●	●	●	●	●	●	●	●	●	●	●	●	●	●	●	●	●	●	●	●		
RED DSMC2	●	●	●	●	●	●	●	●	●	●	●	●	●	●	●	●	●	●	●	●	●	●	●	●	●	●	●	●	●	●	●	●	●	●	●	●	●	●	●	●		
RED Komodo	●	●	●	●	●	●	●	●	●	●	●	●	●	●	●	●	●	●	●	●	●	●	●	●	●	●	●	●	●	●	●	●	●	●	●	●	●	●	●	●		
RED V-Raptor	●	●	●	●	●	●	●	●	●	●	●	●	●	●	●	●	●	●	●	●	●	●	●	●	●	●	●	●	●	●	●	●	●	●	●	●	●	●	●	●		
Canon C500				●	●	●	●	●	●	●	●	●	●	●	●	●	●	●	●	●	●	●	●	●	●	●	●	●	●	●	●	●	●	●	●	●	●	●	●	●		
ARRI Alexa M	●													●	●	●	●	●	●	●	●	●	●	●	●	●	●	●	●	●	●	●	●	●	●	●	●	●	●	●		
ARRI Mini			●	●	●	●	●	●	●	●	●	●	●	●	●	●	●	●	●	●	●	●	●	●	●	●	●	●	●	●	●	●	●	●	●	●	●	●	●	●	●	
ARRI Mini LF														●	●	●	●	●	●	●	●	●	●	●	●	●	●	●	●	●	●	●	●	●	●	●	●	●	●	●	●	
Phantom Flex 2K	●	●	●	●	●													●	●	●	●	●	●	●	●	●	●	●	●	●	●	●	●	●	●	●	●	●	●	●	●	
Phantom Flex 4K	●	●	●	●	●													●	●	●	●	●	●	●	●	●	●	●	●	●	●	●	●	●	●	●	●	●	●	●	●	●
Sony FX6	●	●	●	●	●	●	●	●	●	●	●	●	●	●	●	●	●	●	●	●	●	●	●	●	●	●	●	●	●	●	●	●	●	●	●	●	●	●	●	●	●	●
Sony F55	●	●	●	●	●	●	●	●	●	●	●	●	●	●	●	●	●	●	●	●	●	●	●	●	●	●	●	●	●	●	●	●	●	●	●	●	●	●	●	●	●	●
Sony F55 w/ Recorder														●	●	●	●	●	●	●	●	●	●	●	●	●	●	●	●	●	●	●	●	●	●	●	●	●	●	●	●	●
Sony Venice	●	●	●	●	●	●	●	●	●	●	●	●	●	●	●	●	●	●	●	●	●	●	●	●	●	●	●	●	●	●	●	●	●	●	●	●	●	●	●	●	●	●
Sony Venice II #	●	●	●	●	●	●	●	●	●	●	●	●	●	●	●	●	●	●	●	●	●	●	●	●	●	●	●	●	●	●	●	●	●	●	●	●	●	●	●	●	●	●

## ENG CAMERA & LENS COMBINATIONS

	Fujinon HA14x4.5 (HD)	Fujinon HA42x9.7 (HD)	Fujinon HA42x13.5 (HD)	Fujinon UA24x7.8 (4K)	Fujinon UA46x9.5 (4K)	Fujinon UA46x13.5 (4K)	Canon HJ24x7.5 (HD)	Canon HJ40x10 (HD) #	Canon HJ40x14 (HD) #	Canon CJ14x4.3 (4K)	Canon CJ20x7.5 (4K) #
Sony P50 (4K)	●	●	●	●	●	●				●	●
Sony P43 (4K)	●	●	●	●	●	●				●	●
Sony P1 (HD)	●	●	●	●	●	●				●	●
Sony P70 (HD)	●	●	●	●	●	●				●	●
Sony 2500*	●	●	●	●	●	●				●	●
Ikegami F3000 (HD) <sup>⊖</sup>	●	●	●	●	●	●				●	●
Ikegami F4000 (4K)	●	●	●	●	●	●				●	●
NEC NC-H1200S (HD)	●	●	●	●	●	●				●	●
Grass Valley LDX86C (4K)	●	●	●	●	●	●				●	●
Grass Valley LDX80C (HD)	●	●	●	●	●	●				●	●
RED DSMC1	●	●	●	●	●	●	●	●	●	●	●
RED DSMC2	●	●	●	●	●	●	●	●	●	●	●
Canon C500	●	●	●	●	●	●	●	●	●	●	●
ARRI Alexa M										●	●
ARRI Mini	●			●							
Sony F55										●	●

- KEY:
- = with HDx35 adaptor
  - = IBE 1.4x
  - = flipped
  - = RF to PL lens mount adaptor required
  - = Arri Mini/LF EF lens mount required
  - = E to EF lens mount required
  - = IBE 2x
  - = with Jetpack SDI Expander
  - = with Sony B4 to FZ Adaptor
  - = RF to EF lens mount required
  - = E to PL lens mount required
  - = Not tested

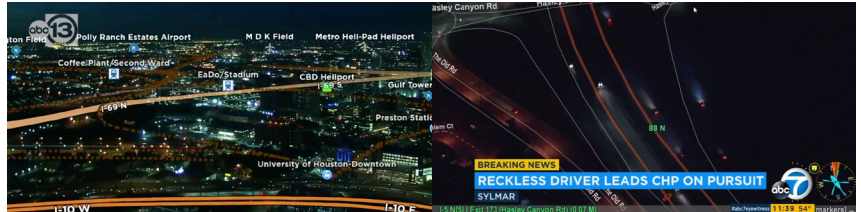
\*The standard F1 configuration includes everything necessary to integrate the above camera and lens combination with the exception of the Sony 2500 which must be repackaged.

<sup>⊖</sup> Obsolete  
# Scheduled for development

Please note cameras and lenses not included. This list is not all inclusive. Please contact sales@shotover.com for additional combinations.

Manufacturer reserves the right to change specification to reflect improvements and/or changes in technology at any time.

## REAL-TIME AUGMENTED REALITY MAPPING



SHOTOVER's new AR mapping software for broadcast TV overlays geo-referenced data on live video. Operators in aircraft or control rooms can interact and control broadcast content shown on live airborne video.

- Live video displays streets, businesses, and more
- Instantly locate breaking news with address search
- Measure areas, estimate crowds with shape tools
- Automated camera steering eases operator load
- Customized branding, colors, logos, on-screen graphics
- Inclusive lifetime software updates

## UNRIVALED SUPPORT AND WARRANTY

- Includes 1-Year Hardware Warranty
- No Annual Fee for Support or Software Updates
- 24/7 Service and Support Line

5.1.2025